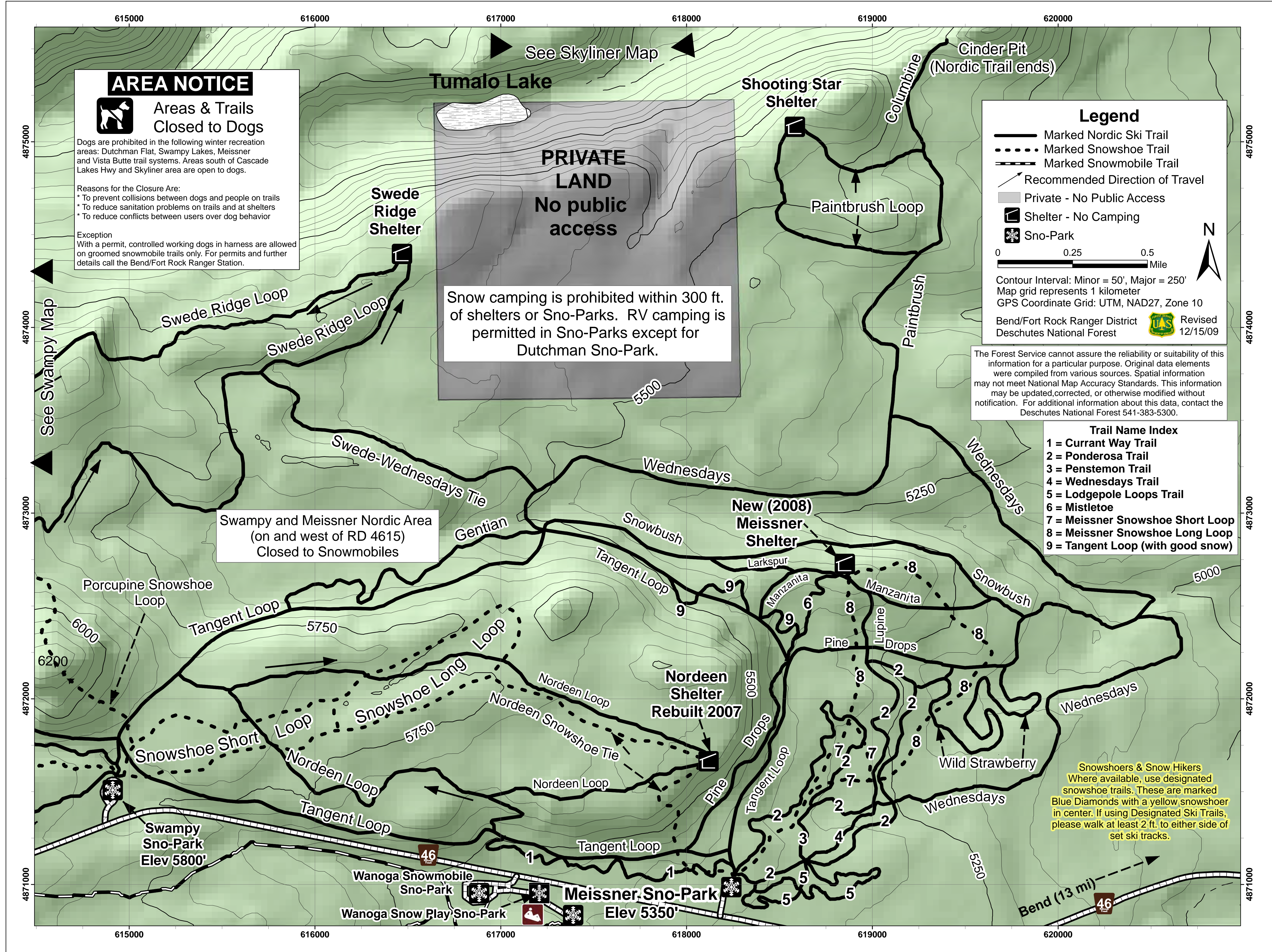


Meissner Sno-Park Area NORDIC SKI & SNOWSHOE TRAILS



AREA NOTICE

Areas & Trails Closed to Dogs

Dogs are prohibited in the following winter recreation areas: Dutchman Flat, Swampy Lakes, Meissner and Vista Butte trail systems. Areas south of Cascade Lakes Hwy and Skyliner area are open to dogs.

Reasons for the Closure Are:

- * To prevent collisions between dogs and people on trails
- * To reduce sanitation problems on trails and at shelters
- * To reduce conflicts between users over dog behavior

Exception
With a permit, controlled working dogs in harness are allowed on groomed snowmobile trails only. For permits and further details call the Bend/Fort Rock Ranger Station.

Legend

- Marked Nordic Ski Trail
- - - Marked Snowshoe Trail
- · · Marked Snowmobile Trail
- ↔ Recommended Direction of Travel
- Private - No Public Access
- ☐ Shelter - No Camping
- ❄ Sno-Park

0 0.25 0.5 Mile

Contour Interval: Minor = 50', Major = 250'
Map grid represents 1 kilometer
GPS Coordinate Grid: UTM, NAD27, Zone 10

Bend/Fort Rock Ranger District Revised 12/15/09
Deschutes National Forest

The Forest Service cannot assure the reliability or suitability of this information for a particular purpose. Original data elements were compiled from various sources. Spatial information may not meet National Map Accuracy Standards. This information may be updated, corrected, or otherwise modified without notification. For additional information about this data, contact the Deschutes National Forest 541-383-5300.

Swampy and Meissner Nordic Area (on and west of RD 4615) Closed to Snowmobiles

Snowshoers & Snow Hikers
Where available, use designated snowshoe trails. These are marked Blue Diamonds with a yellow snowshoer in center. If using Designated Ski Trails, please walk at least 2 ft. to either side of set ski tracks.